



Jonoke Software Development Inc.

8709 102 Avenue
Edmonton, Alberta
Canada T5H 4E5
Ph: (780) 448-3647
Fax: (780) 448-3741

Technote

Installing MediFile for MacOS Server

Date: 23 February 2002
Author: Jody Bevan
Enhancement:
Bug Fix:
Skill Level: System Administrator

Description

This technote describes what files and folders need to be installed where on a MacOS Server. Keep this technote handy when ever you need to install an update.

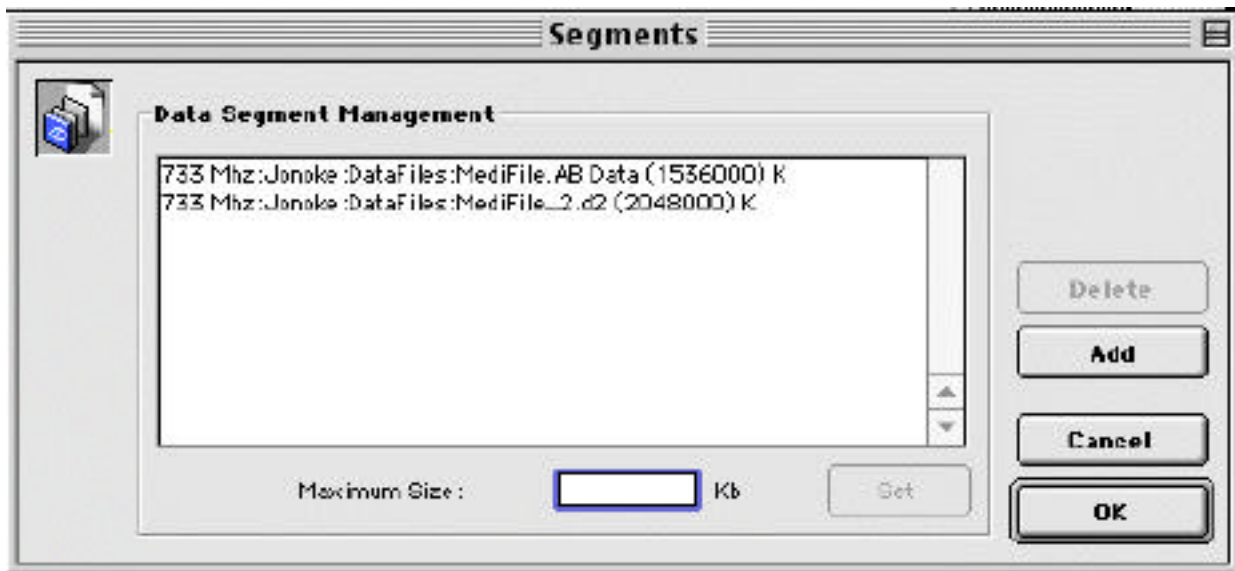
Detail

Step 1: Before shutting down your server determine where your data files are located. This is a very important step. Each site can be slightly different because of the configuration of their hardware. Do this as follows:

- In the Server's Data menu select 'Segments'. Data --> Segments.

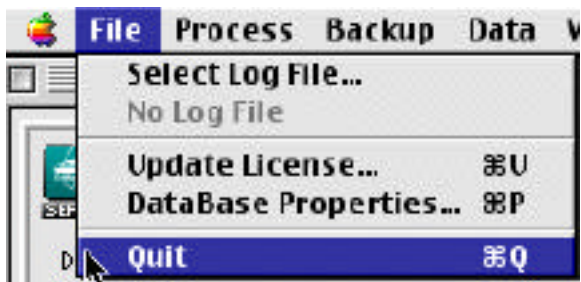


This will open a window showing all the data segments in use by your current version of MediFile.

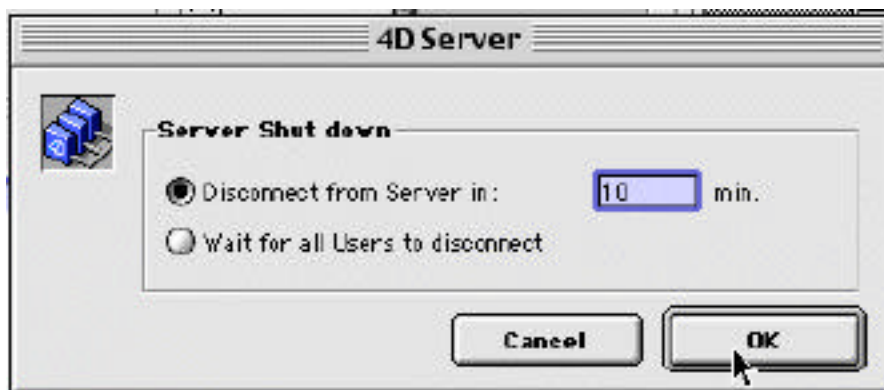


In the example shown here there are two data files in use. Write down the location of each of these data files. You may need this information when you startup the new version. If the pathnames for any of the data segments starts with ‘...’ this means that the window is not wide enough to display the full pathname. Drag the window wider by dragging the lower right corner of the window to the right until you can see the full pathname to all the data files.

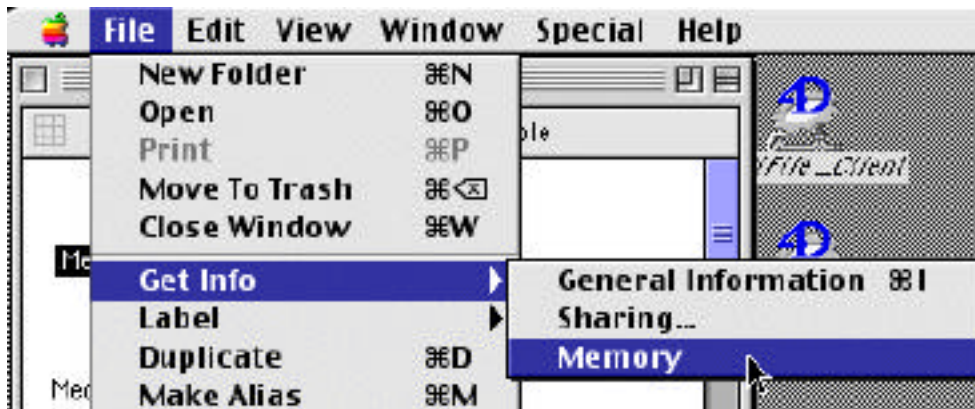
Step 2: Shut the MediFile Server down. File --> Quit



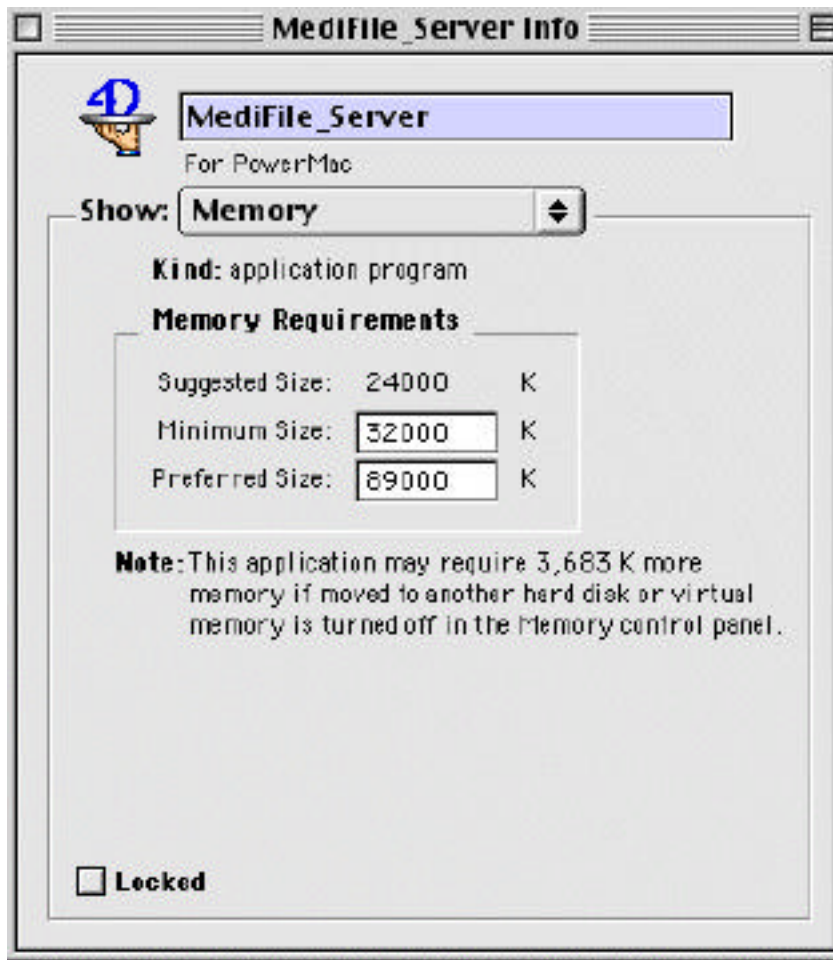
This will bring up a dialog box asking you how soon to shut the server down. If there are no users you can change the time to ‘0’ minutes. Otherwise you can give users warning by entering in the number of minutes. The default is 10. Click on the OK button. The 4D Server will quit.



Step 3: Click once on the MediFile_Server on your hard drive. Then from the File menu select Get Info --> Memory.



Step 4: This will bring up the memory settings for your specific copy of the Server. It is important to write this down.



You want to write down the Minimum Size number (32000 in this example), and the Preferred Size (89000 in this example).

Step 5: Close this window.

Step 6: Backup the MediFile files you currently have on your computer. When installing any new software always make a backup. This includes your data files. If you have a backup on tape that is good enough. It is not likely you will have to use it, but you must always plan for a problem.

On your Server go to the Jonoke folder. Create another folder called 'Prev Version'. In this folder move the MediFile_Server, and MediFile_Program folder. If your computer has a MediFile DATA folder move that folder into the Prev Version folder. The MediFile_Program folder is replacing the MediFile DATA folder.

Step 7. Insert the CD from Jonoke, or copy the files from the Jonoke FTP site. You will have the following files and folders.

If you have the MediFile Update CD from Jonoke look in the MediFile v3 folder. Inside this folder will be a folder with the name of OEM version date. For example OEM 21Feb02 indicates that this is the 21st of February 2002 MediFile update CD.

To install MediFile on the MacOS Server you need the files and folders in the OEM folder.



If you are only getting up update to the MediFile program, you will not need to replace your copy of the MediFile_Server, or MediFile Client software. The Server and client do not change that often. This technote will cover installing these as well. Depending on your site, some of the settings withing the MediFile_Server and MediFile Client will need to be adjusted.

Step 8: Take a look inside the MediFile_Program folder. This is just a double check to ensure that everything is in it that need to be there.

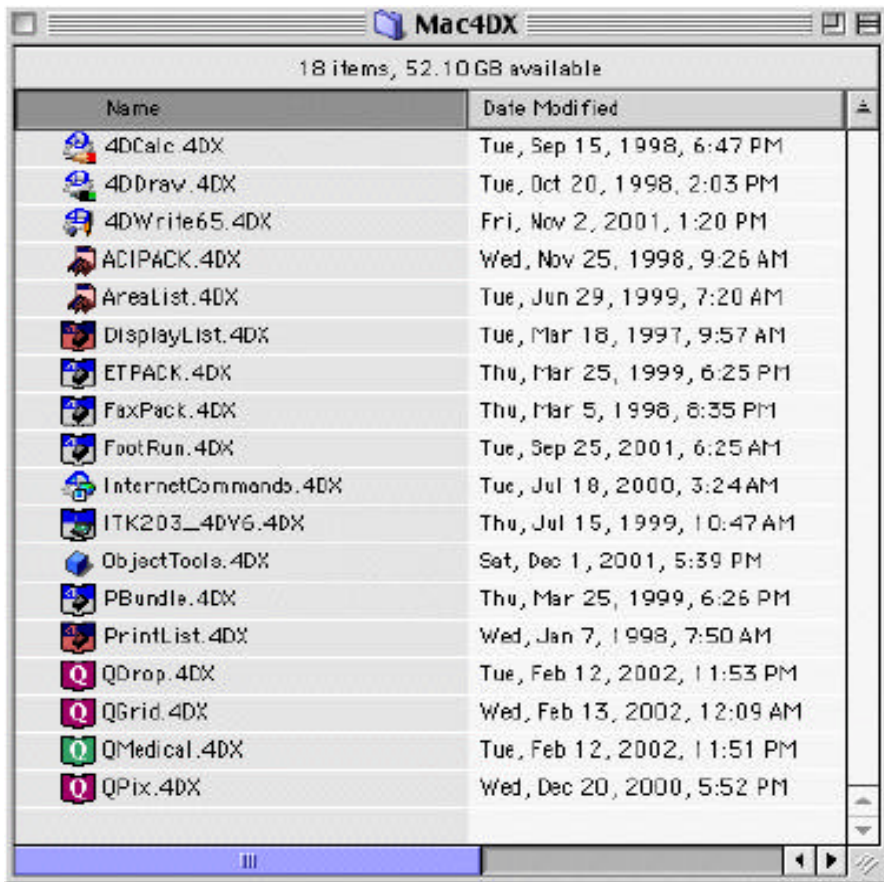


MediFile -> MediFile Program Code

Mac4DX -> Specialized Macintosh OS code used in MediFile

Win4DX -> Specialized Windows OS code used in MediFile

The Mac4DX should have 18 items in it.



The Win4DX folder should have 40 items in its folder. There will be two files for each of the files in the Mac4DX folder. In addition there will be these two additional files: QTMLGlue.DLL and W4D_Drag.DLL.

Step 9: Since you have the MediFile Server shut down this is a good time to also check on the size of the data files on your system. MediFile support up to 256 gigabytes of data in the main data files. At even our largest sites (69 doctors) we do not expect them to hit this limit for 20 years. By then MediFile will support much more than that.

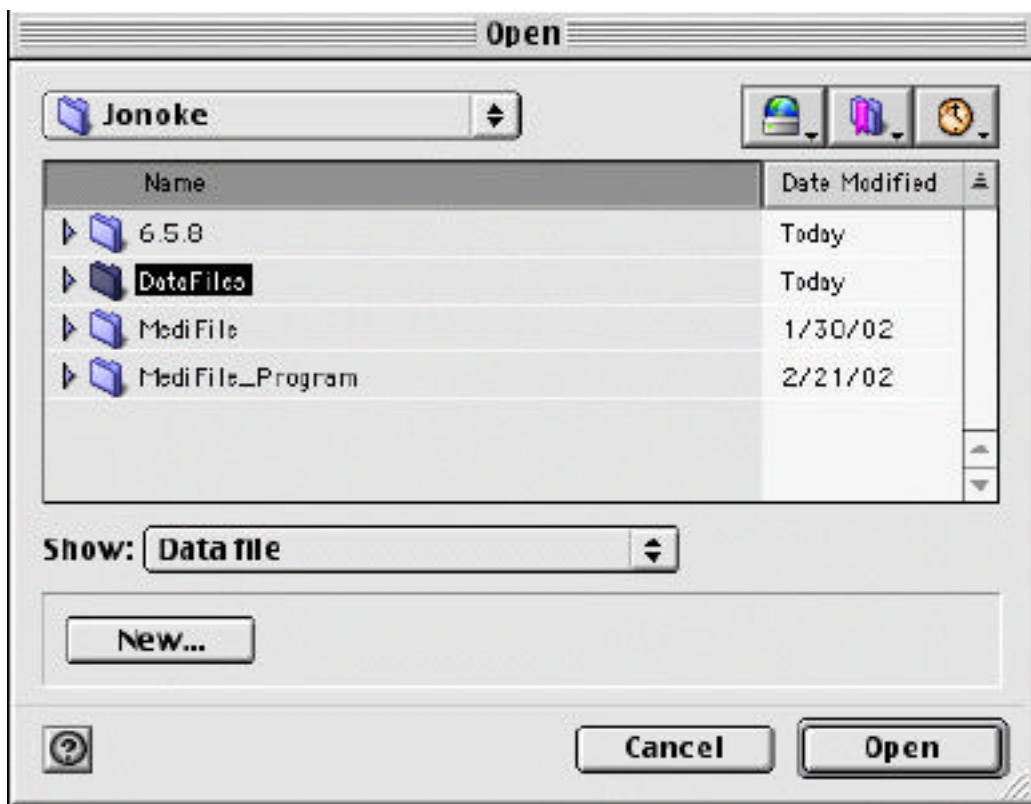
Find the location of your data files as you wrote them down from step 1. It is most important to look at the size of the last segment of the data file. Typically when Jonoke sets up MediFile we will put the limit on the first data segment at about 1.5 gigabytes. The rest of the segments will be limited to just under 2 gigabytes. Look at the last data file's size. If it is over 1.5 gigs you need to make another segment when we restart the server. You need to check that your server has enough hard drive space.

Step 10: If you have the MediFile CD in your computer, remove it.

Step 11: As in Step 3 above, check the memory settings for the MediFile Server. If the new version is different than what your old version was, change the settings in the new version to exactly what they were in the old version.

Step 11: Double click on the MediFile_Server icon in the Jonoke Folder.

MediFile Server will launch, and automatically load the MediFile_Program. It may now ask you to find your data files.



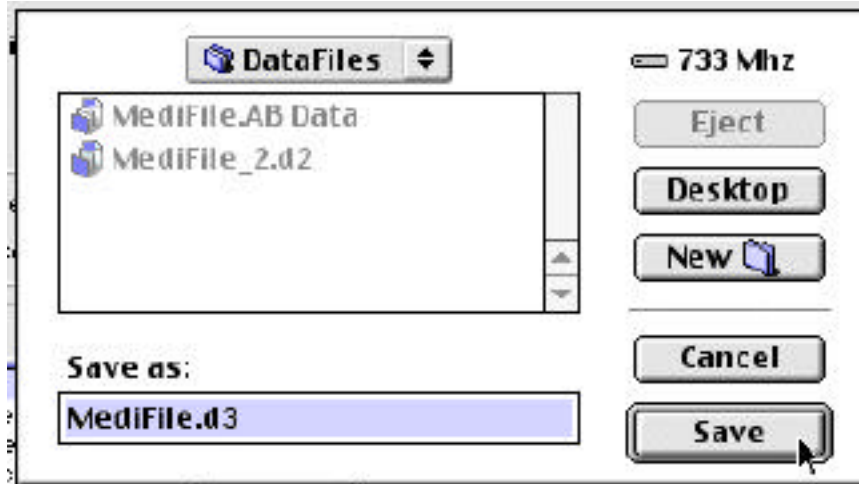
Step 12: Using the MacOS Standard open file dialog, find your 1st data file segment. Refer to the notes you made in step 1 to assist you in finding the data segment. Only the 1st data file segment will show in the dialog. Click once on the data file, and then click on the open button. The location of the other data segments will now

be found by the server.

Step 13: Repeat Step 1 to ensure that all the data segments are found properly by the server.

Step 14: If your last data segment is larger than 1.5 gigs as determines in step one you need to add another data segment. With the Data Segments window still open click on the Add button.

Typically you save the new segment in the same folder as the other data segments. This will help to ensure that it gets backed up with the Retrospect backup software. MediFile_Server will name the segment for you.

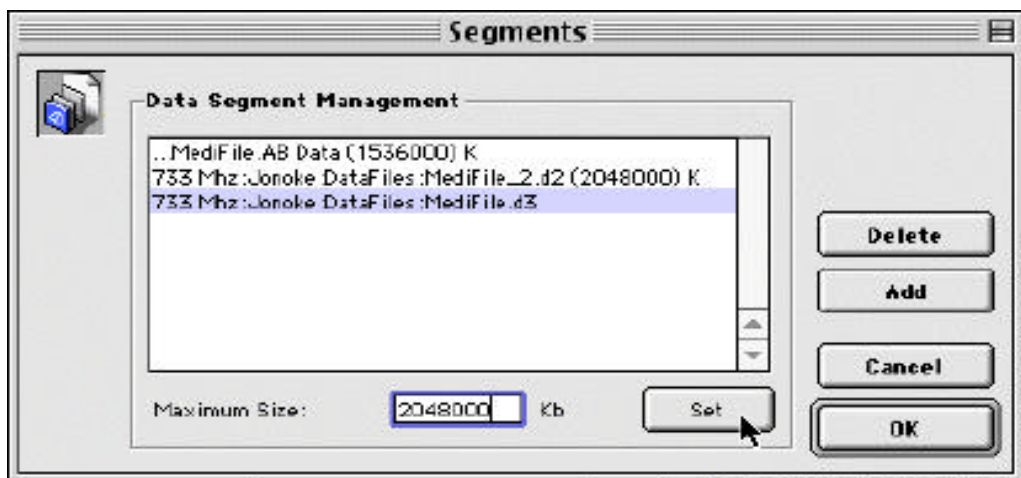


Click on the Saver button.

Step 15: You now need to set the segment size limit. In the Segments dialog click once on the segment you just created.

Step 16: In the Maximum Size field enter 2048000 exactly. This is 2 million 48 thousand.

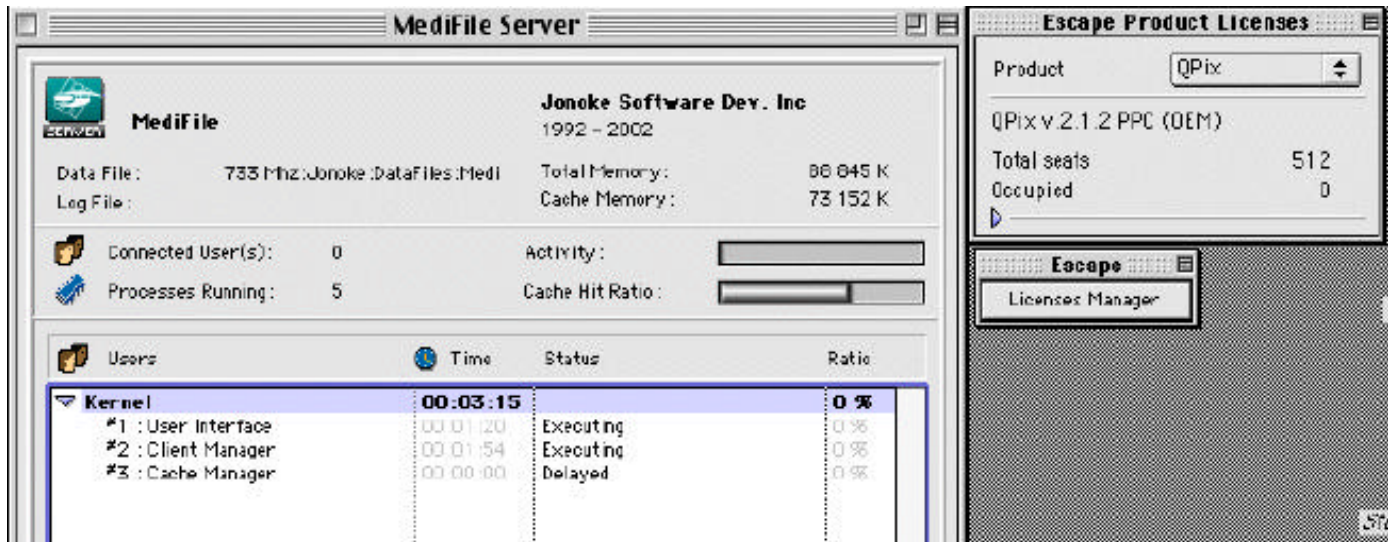
Step 17: Click on the Set button



You will see the segment size added to the segment name.

Step 18: Click on the OK button.

Step 19: Check the Server Window. It should look similar to the following figure.



Step 19: Log onto the Server from the client computers to ensure it works for you. Note that there will likely be some duplicating of resources.