

Jonoke Software Development Inc.

8709 102 Avenue
Edmonton, Alberta
Canada T5H 4E5
Ph: (780) 448-3647
Fax: (780) 448-3741

Technote

MediFile Signing In

Date: 12 January 2002
Author: Jody Bevan
Enhancement: Use of Jonoke Password System for additional Security
Bug Fix: Work around for Problem in 4D Password System
Skill Level: All Users

Description

MediFile now uses a password system that we used in version 2.6 of MediFile. This means that there are two password systems to go through. The first is the 4D password system, and then the Jonoke password system. Once in you will use the Jonoke password system when changing users.

There is a bug in the 4D Password system that causes the server to slow or even stop processing if there are several workstations with the password system on the screen. To get around this the Jonoke password system is used for changing users once in MediFile. Additionally the Jonoke password system provides many more security features and tracking than the 4D password system provides.

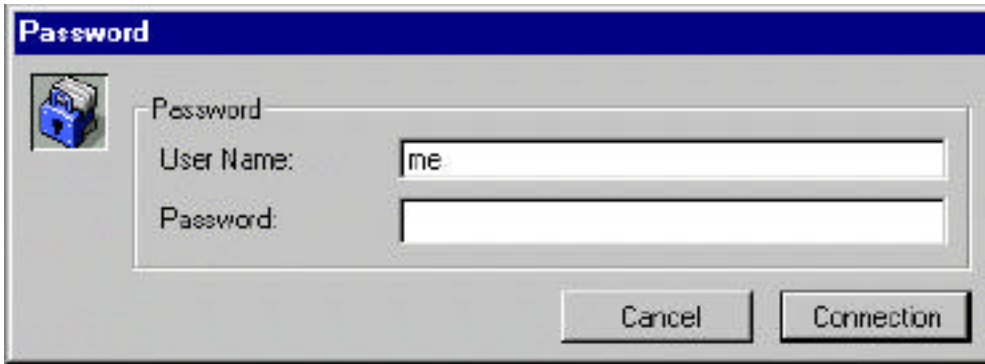
One advantage of using this new password system is that when installing a new version of MediFile there is no need to save the user list and then load it into the new version.

***** Before upgrading to 3.1 ensure that you have given every user in the User file a password. *****

Signing On

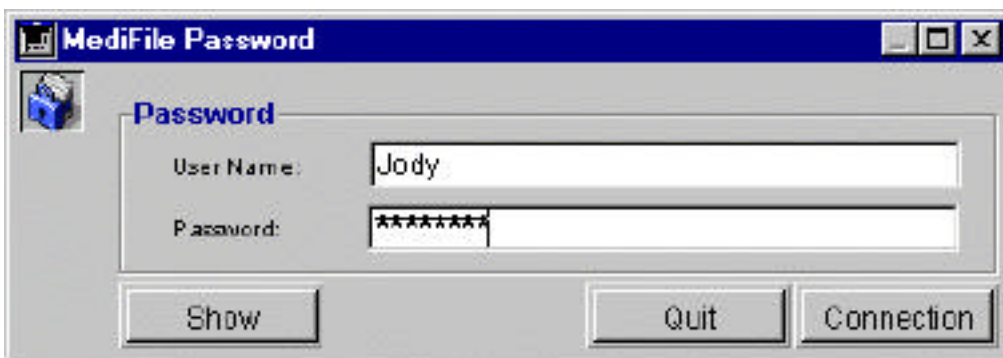
Step 1:

The 4D Password system will be presented. Enter the User name of 'Me' without a password and click Connection.



Step 2:

Now the MediFile Password system will be presented. Enter your User Name and then the password as is stored in the user file.



If you enter the password wrong MediFile will shake the password window side to side like it is shaking it's head 'no'. If you would like to check what you are entering for the password you can click on the show button. This will show your password.

Once you enter the password correctly you will be brought into MediFile. Everything else works the same.

New Features of the MediFile Password System

The MediFile password system is totally under Jonoke control Therefore we are able to provide many security features. All of the features of the version 2.6 MediFile password system are back again as well as additional ones.

To see the features that are available to you go to File --> Administration --> Page 3 --> Preferences

Password Rules

Password Uniqueness

Do Not Keep Password History

Remember Passwords

Maximum Password Age

Password Never Expires

Expires In Days

Requirements

Mn # Chars

Mix of Numbers & Letters

Excluded Words

User Lockout

No User Lockout

Lockout after bad attempts

Lockout Duration

Forever (until Admin unlocks)

Duration minutes

Lockout Inactive User

Lock Out User that has not logged in for days

Signing in as the Administrator

There are still some things that you need to be signed in as the System Administrator to access. This needs to be done in the 4D password system. If you are just starting MediFile don't use the 'me' user name. Instead use the Administrator name and password.

If you are already running MediFile you can access the 4D password system by holding the shift key down while selecting File --> Change User. This will bring up the 4D password system.