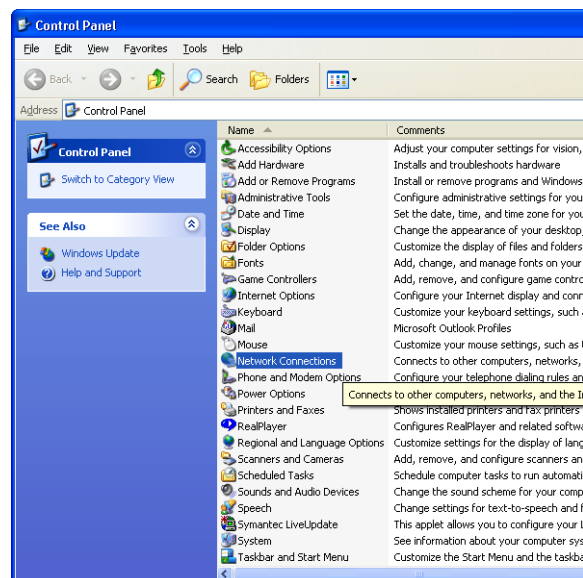


Windows XP Dial-Up Connections

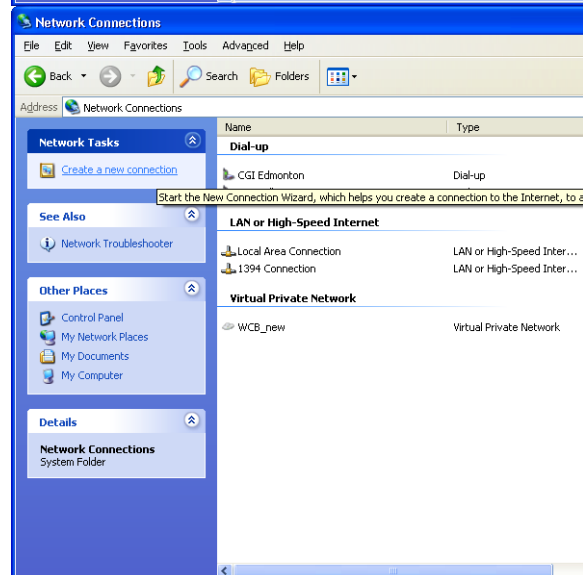
Disclaimer: These settings have not been thoroughly tested on Windows XP and therefore may not be error free. Configurations other than what is shown here may prove to be more effective in connecting to h-link.

Creating a Dial-Up Connection

Click the **Start** button. Click on the **Control Panel** hyperlink.
Double click on **Network Connections**.



Click on the **Create a New Connection** hyperlink.



Click the **Next** button.



Select the **Connect to the Network at my Workplace** option. Click the **Next** button.



Select the **Dial up Connection** option.
Click the **Next** button.

The screenshot shows the 'New Connection Wizard' dialog box with a blue title bar. The main content area has a light beige background. At the top, it says 'Network Connection' and 'How do you want to connect to the network at your workplace?'. Below this, it asks 'Create the following connection:'. There are two radio button options: 'Dial-up connection' (which is selected) and 'Virtual Private Network connection'. The 'Dial-up connection' option has a description: 'Connect using a modem and a regular phone line or an Integrated Network (ISDN) phone line.' The 'Virtual Private Network connection' option has a description: 'Connect to the network using a virtual private network (VPN) connection over the Internet.' At the bottom right, there are two buttons: '< Back' and 'Next >'.

Type a name for this connection. **H-Link**
will do for a name. Click the **Next** button.

The screenshot shows the 'New Connection Wizard' dialog box with a blue title bar. The main content area has a light beige background. At the top, it says 'Connection Name' and 'Specify a name for this connection to your workplace.' Below this, it asks 'Type a name for this connection in the following box.' There is a text input field labeled 'Company Name' containing the text 'H-Link'. Below the input field, there is a note: 'For example, you could type the name of your workplace or the name of the network you will connect to.' At the bottom right, there are two buttons: '< Back' and 'Next >'.

Type the phone number for the H-Link. Remember to include the area code and any numbers necessary to get an outside line before the **429-5820** number. Click the **Next** button.

Select the **Anyone's Use** option unless it is specifically needed to limit this connection to one user. Click the **Next** button.

New Connection Wizard

Phone Number to Dial
What is the phone number you will use to make this connection?

Type the phone number below.

Phone number:
9-429-5820

You might need to include a "1" or the area code, or both. If you do, you need the extra numbers, dial the phone number on your telephone. When you hear a modem sound, the number dialed is correct.

< Back Next >

New Connection Wizard

Connection Availability
You can make the new connection available to any user or only to you.

A connection that is created for your use only is saved in your user account and is available unless you are logged on.

Create this connection for:

Anyone's use

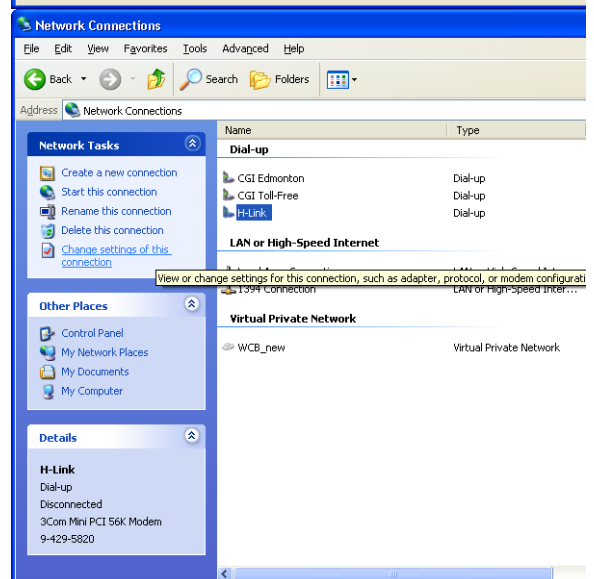
My use only

< Back Next >

Check the **Add a Shortcut to this Connection to My Desktop** check box if desired. Click the **Finish** button.



There are a few properties that cannot be set using the New Connection Wizard. Follow the steps in the [Modifying the Properties of a Dial-Up Connection](#) section of this document to complete the set-up of the new connection.

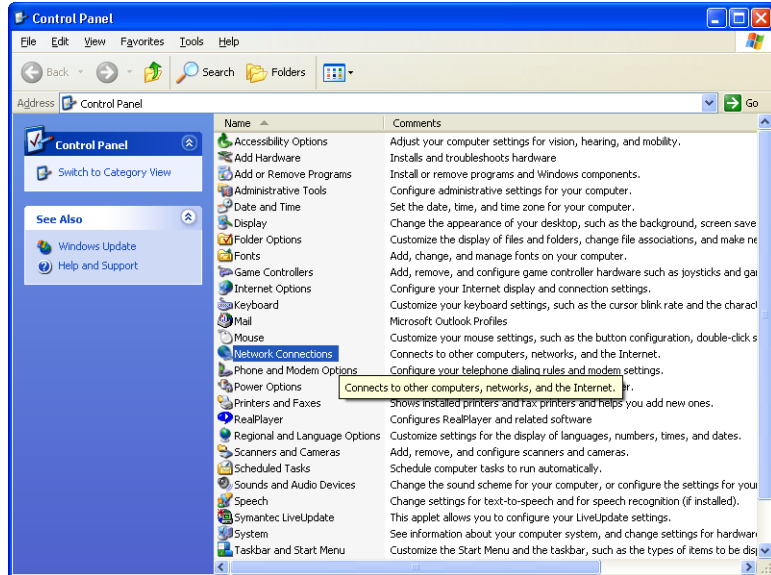


Modifying the Properties of a Dial-Up Connection

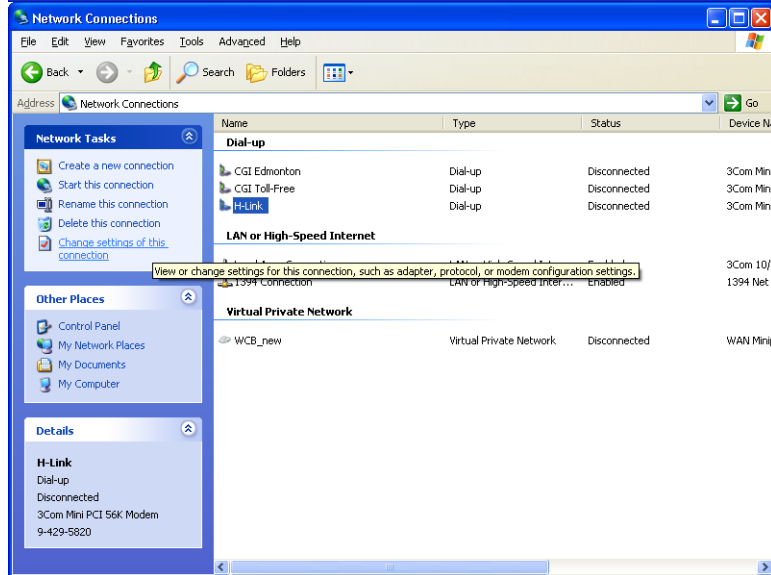
If the **Network Connections** window is already open, skip to the third step in this section.

Click the **Start** button.
Click on the **Control Panel** hyperlink.

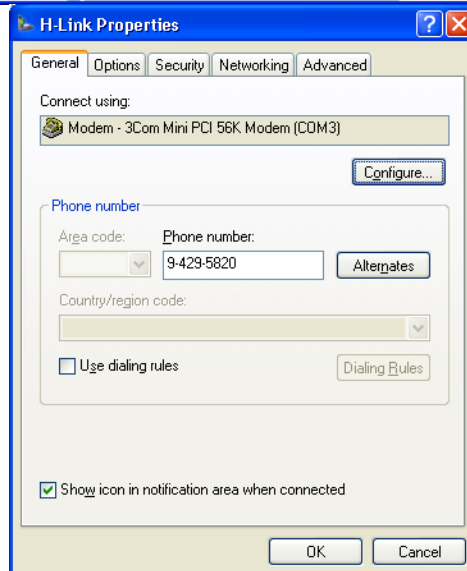
Double click on **Network Connections**.



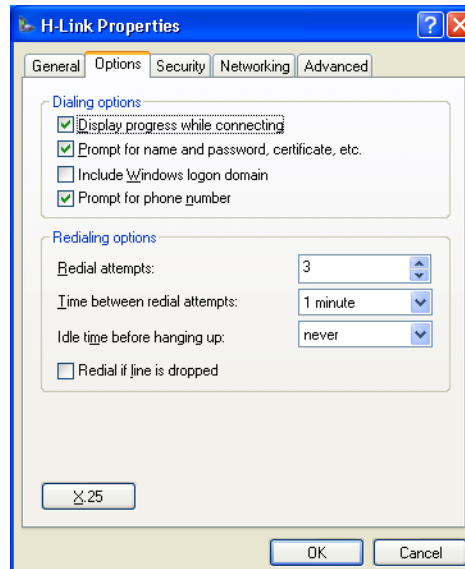
Select the **H-Link** connection. Select the **Change Settings of This Connection** hyperlink.



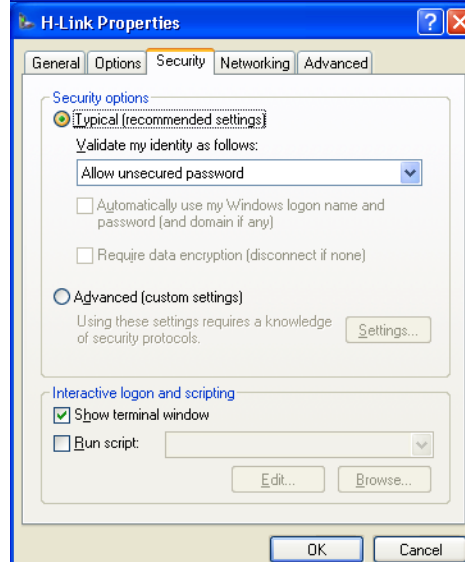
On the **General** tab, ensure that the phone number is a variation of **429-5820**.



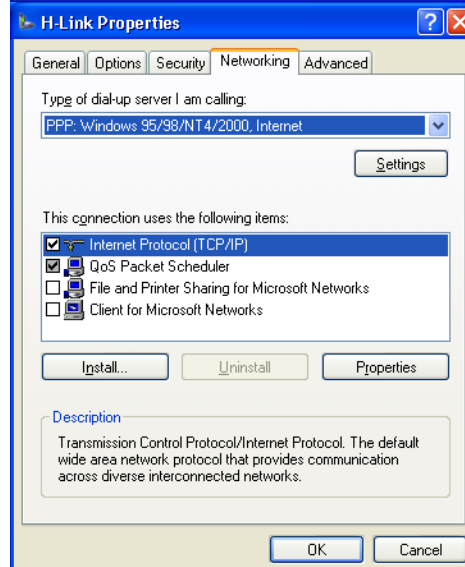
Select the **Options** tab.
The defaults are shown and will work.



Select the **Security** tab.
The **Show Terminal Window** check box must be checked. The defaults are shown for all other controls and will work.



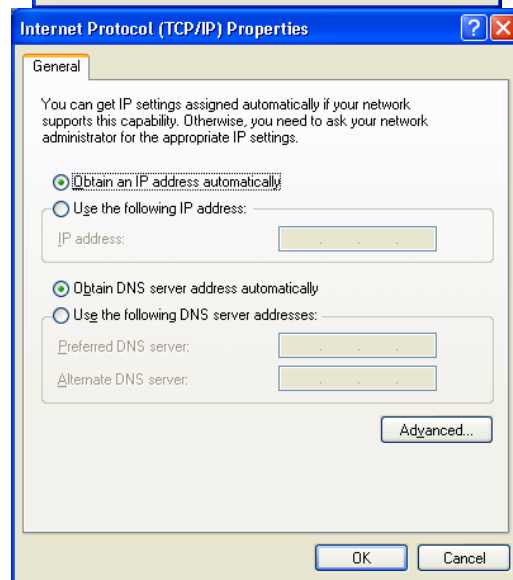
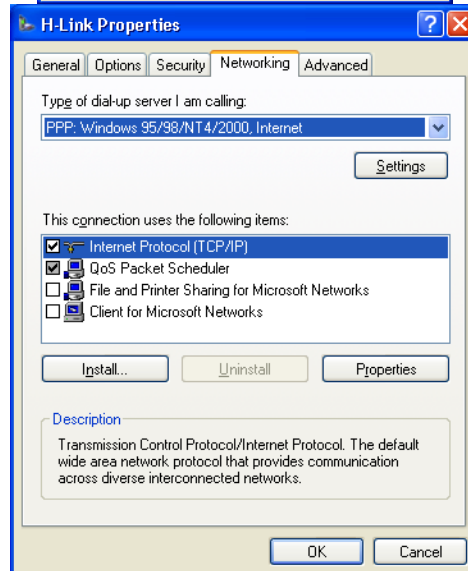
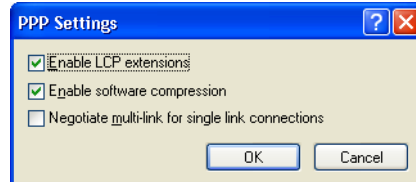
Select the Networking tab.
The **Type of Dial-up Server I am Calling** drop down list must be **PPP, Windows 95/98/NT4/2000, Internet**. Click the **Settings** button.



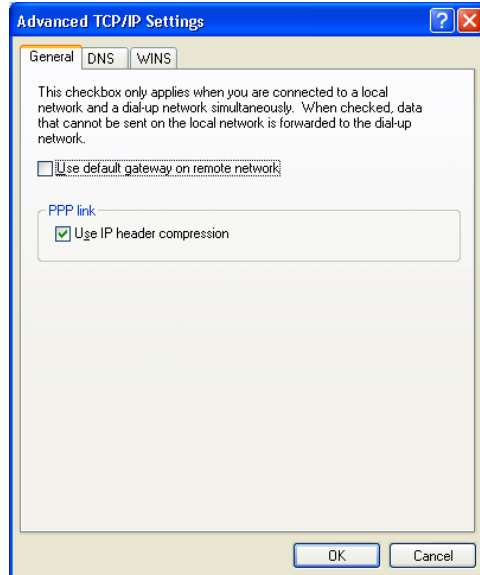
The defaults are shown and will work. Click the **OK** button.

The **This Connection Uses the Following Items** list box must have the **Internet Protocol (TCP/IP)** check box checked. The **QoS Packet Scheduler** check box cannot be unchecked. This is okay. All other connection check boxes should be unchecked. Select the **Internet Protocol (TCP/IP)** protocol and click the **Properties** button.

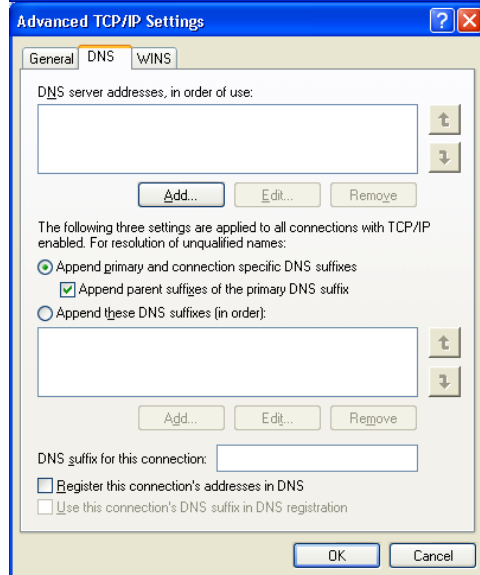
The **Obtain an IP Address Automatically** option and the **Obtain DNS Server Address Automatically** option must be selected. Click the **Advanced** button.



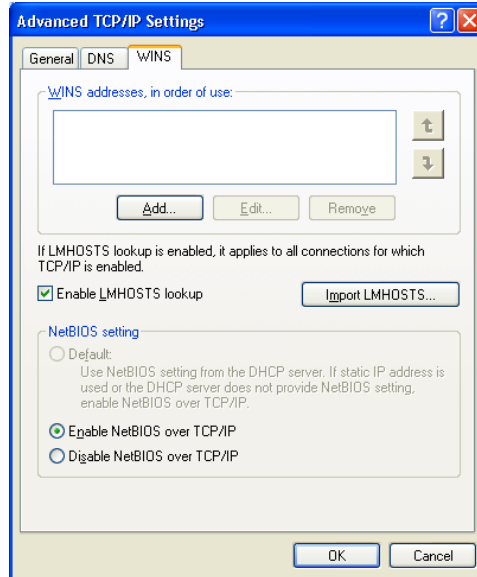
Select the **General** tab.
The **Use Default Gateway on Remote Network** check box should not be checked. The defaults are shown for all other controls and will work.



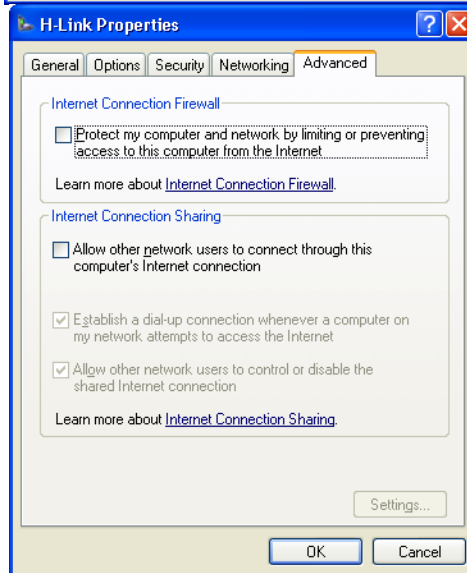
Select the **DNS** tab. The defaults are shown and will work.



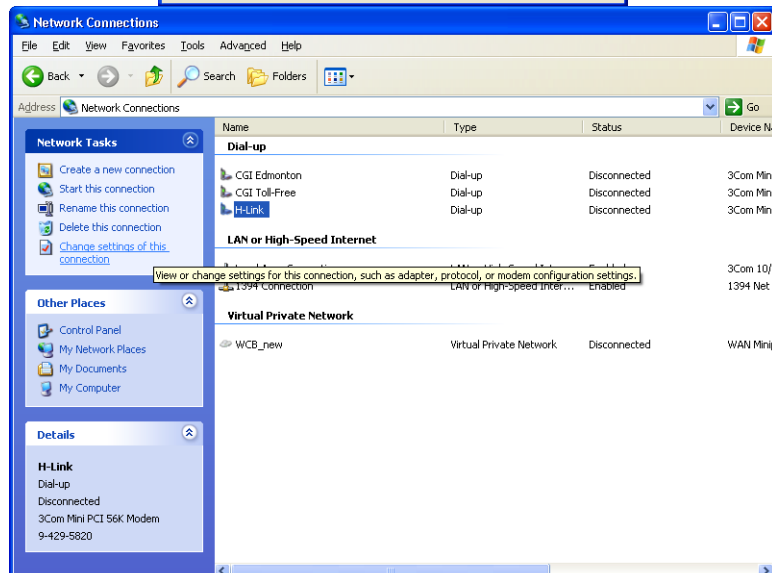
Select the **WINS** tab. The defaults are shown and will work. Click the **OK** button.



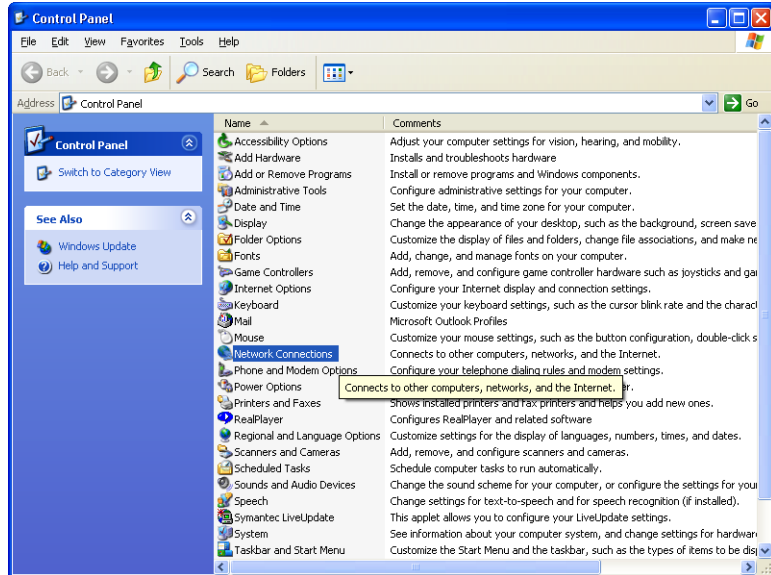
Select the **Advanced** tab. The defaults are shown and will work. Click the **OK** button.



Close the **Network Connections** window.



Close the **Control Panel** window.



Possible Errors

This error indicates that the **Show Terminal Window** check box is not checked. Follow the steps in the [Modifying the Properties of a Dial-Up Connection](#) section of this document.

