



Jonoke Software Development Inc.

Suite 214, Capilano Centre
9945 50 Street
Edmonton, Alberta, Canada
T6A 0L4

Telephone (780) 448-3647
Toll-free 1-800-254-0739
Fax (780) 448-3741

www.jonoke.com

FORMBUTLER

MediFile© Add-on Component.



THE PROCESS OF COMPLETING FORMS SIMPLIFIED.

Fill forms quickly and accurately with Jonoke's FormButler™.

Filling out paper forms is often laborious and time intensive. For each form, you must provide the patient's name, gender, date of birth and many other pieces of information that are readily available to all MediFile© users. If only there were a way that you could have MediFile© automatically fill in that information. Well, now there is. Jonoke's FormButler™ is a MediFile© add-on module that provides an integrated solution to paper forms. Rather than filling out a paper form, the FormButler™ gives you an exact electronic duplicate of the paper form on your screen, pre-filled in with all the information that MediFile© has for your patients. All you have to do is fill in the remaining parts. This process of completing forms just got simpler, more accurate and much quicker. This saves you time and money.

POWERFUL FORM FILLING

Jonoke's FormButler™ displays an on-screen form exactly as it appears when printed. This makes filling out forms much easier, because since you are already familiar with the printed version, you already know where all of the parts of the form are located on the page. All of the demographic information, and medical information that is stored in MediFile© is quickly and accurately entered into the form - what a huge time saver! Lab data, past-obstetrical information, allergies and more are all brought across, so you do not have to enter the information manually with each and every form.

For form information that requires direct information entry; use the keyboard to tab to the next areas; and the mouse to click check-boxes, switch pages and scroll through the form. Even forms that have built-in graphs, like many of the regional prenatal forms, are handled with ease. MediFile© creates the graph from the form's data, and places the graph directly within the form.

SEE REVERSE FOR MORE FEATURES



Jonoke
Software Development Inc.



the form for later use. Clicking on the save button saves the form in the patient's medical record, making it ready for quick and easy access any time it is needed. No need to print and file in a separate chart. No scanning into your system where it is then a graphic that cannot be edited. The FormButler™ allows forms to become an integrated feature within MediFile©, not just a nuisance as with other solutions. No other forms solution matches the ease of use and polish of Jonoke's FormButler™.

SIMPLE FORMS

The FormButler™ also enables you to create your own simple forms. Through the use of the built-in word processor, an integral part of MediFile©, you can recreate electronic forms. These forms are used by the FormButler™ just like the other more pre-designed forms - freeing you to create forms as needed. Simple



forms can fill in automatically with information from within the chart. Though the form is simple, the features are not.

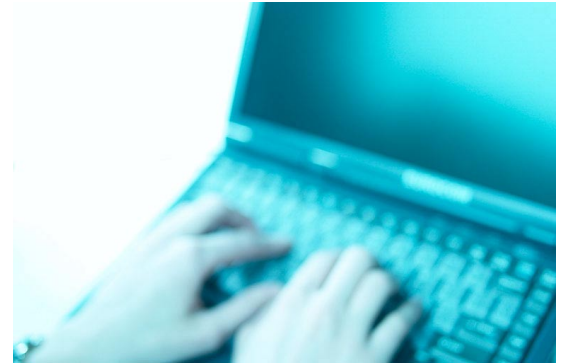
COMPLEX FORMS

The FormButler™ gets you the industry leading J-Forms from Jonoke and any provincial and regional forms that are appropriate for your area. Some forms are simple and some forms are more complex, with check-boxes, shaded areas, graphs, and calculations, but the FormButler™.

CENTRAL CONTROL OF FORMS VERSIONS

It is a known fact that forms inevitably get updated and some change often. Traditionally with printed forms, you never knew if you had the most recent version.

With MediFile©'s FormButler™, forms are distributed directly from Jonoke, so when a new version is released, you get



it. Your server automatically updates the form, making the previous versions historical. No matter what size your clinic is, or the number of sites you have, every user is now synchronized with the correct form version. The instant the new form is saved, every user at every computer, will be using the new version. All previously created forms attached to patients continue to be supported. Previously created forms continue to function fully with the same version of the form that they were created with. Because forms are a medical record, this is key in accurate data tracking. Though they are historical you can still view, print, fax, and add information to them.

In addition, Jonoke can add custom forms that your clinic wants. Send us your forms, we will make your work easier.

COMPLETE AUDIT TRAIL

As you have come to expect with MediFile©, with Jonoke's WebButler™ everything is audited. When a form is viewed/changed/printed, you will know who did it, when they did it, and from where they did it.

CROSS PLATFORM

Of course, every solution that Jonoke produces is cross platform. Therefore MacOS X and Windows' users have full use of the FormButler™ and J-Forms by Jonoke. As well, even remote filling of forms is available through the configuration of MediFile© for remote access by Jonoke.

PRINTING, FAXING, AND SAVING ELECTRONICALLY

Forms exist for many reasons, but mainly to record or transfer information. MediFile©'s powerful features handle the recording of data in patient medical records, but often that information needs to be sent to other organizations via forms. With Jonoke's FormButler™ the form's original layout is maintained ensuring it contains all necessary information. MediFile©'s FormButler™ can print the form out directly to your laser printer. And if you have MediFile©'s FaxButler™, you can fax the form without even printing.

Of course, the MediFile© paperless office by Jonoke, permits you to save

FOR MORE INFORMATION

Contact Jonoke today to find out more about getting your MediFile© system configured with the FormButler.

Jonoke Sales
Phone 1-800-254-0739 ext. 113
Local (780) 448-3647 ext. 113
Fax (780) 448-3741
E-mail sales@jonoke.com

www.jonoke.com/MediFile/butlers